



SENSORS

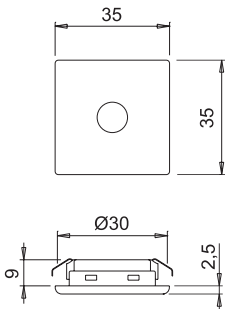
CONTROLLING THE LIGHT

To control the luminaires in a furniture, Domus Extra offer a wide **range of sensors that meet any expectation**. In fact, the lighting requirements may vary either with respect to the functions offered by the device or satisfy the user's specific needs.

Some types of sensors make possible to **turn the luminaires on and off and control them manually**. Others offer the ability to manage controls of this type **automatically and independently** of the user. Using a completely or partially automated system to control the lighting, increases the **visual comfort** and provides increased **energy savings** due primarily to lower power consumption.

From a design viewpoint, the interests of the household are now consolidated with those of controlling and managing a resource that, in addition to its undoubted advantages, can produce conditions of significant visual discomfort. From a technological viewpoint, the now stable distribution of LED devices, the evolution in the techniques for managing control signals, the refinement of electronic components and the development of new designs such as **dynamic lighting** and **mixing of colored lighting** have given a new impulse to the supply of systems for controlling artificial light.

Using Domus Extra sensors, control of the light is assured!



aluminium

TOUCH ME 2.0
dimnable touch switch



Code	Input	Output	Power	Connectors	Finish
1750710	12-24Vdc	12-24Vdc	30-60W	Micro12-Micro24	aluminium



How TOUCH ME works

Turn on and off simply with a quick touch. With a prolonged touch, it is possible to regulate the light intensity (dimmer function). A short flash of TOUCH ME indicates that maximum light intensity has been reached, which will be memorized until it is next reset (level memory).

