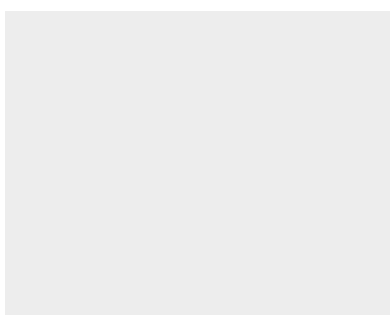
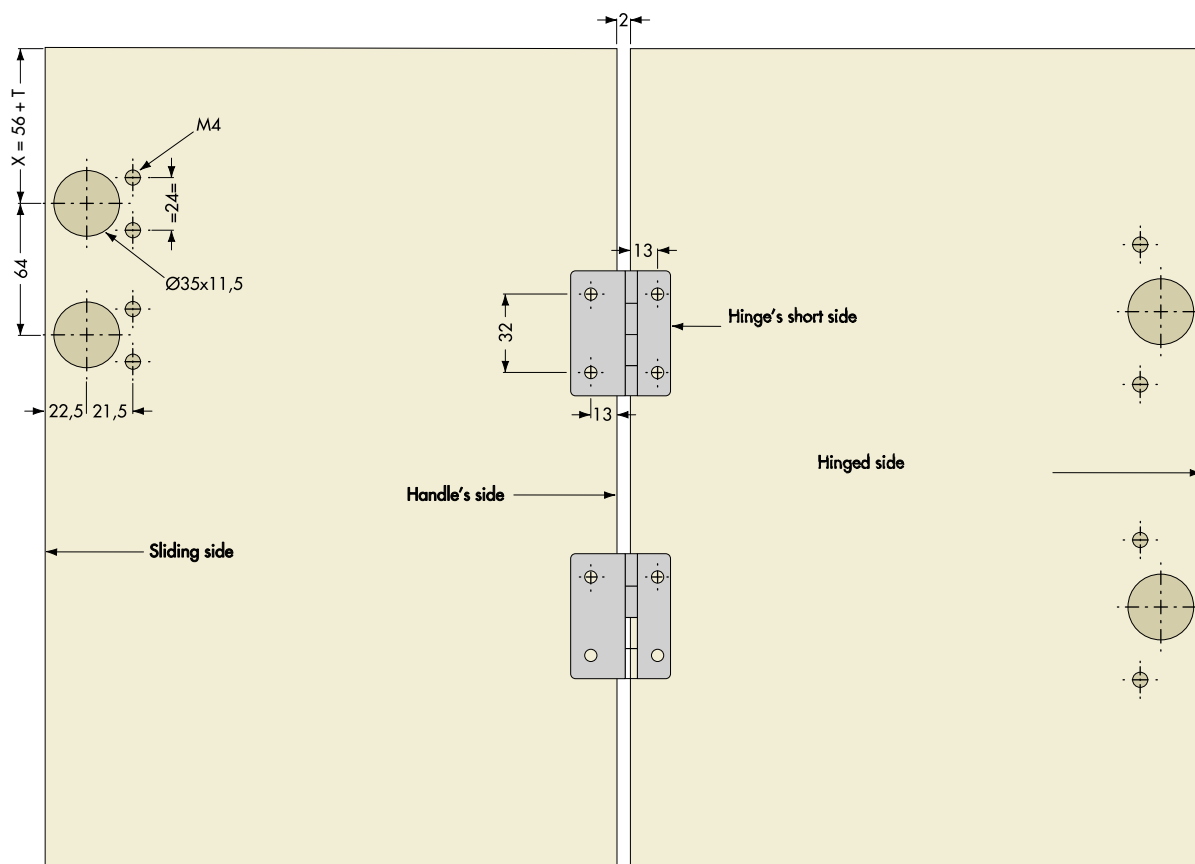
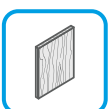
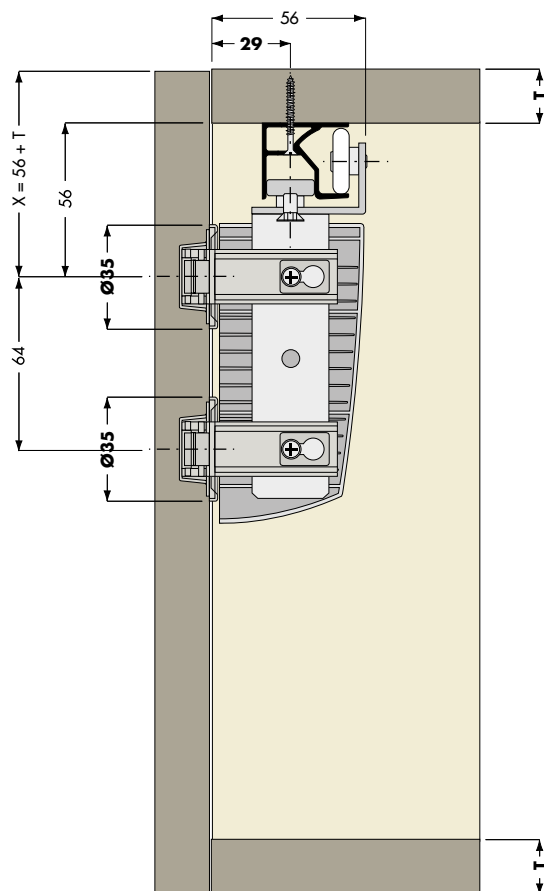
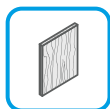


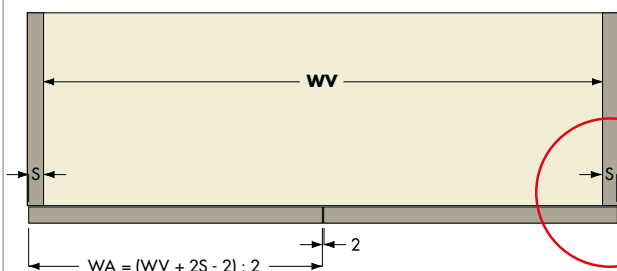


Folding sliding system

PS23





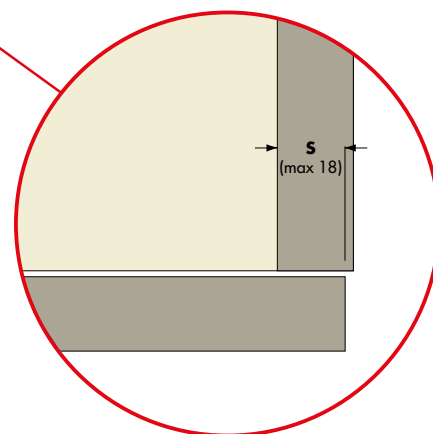
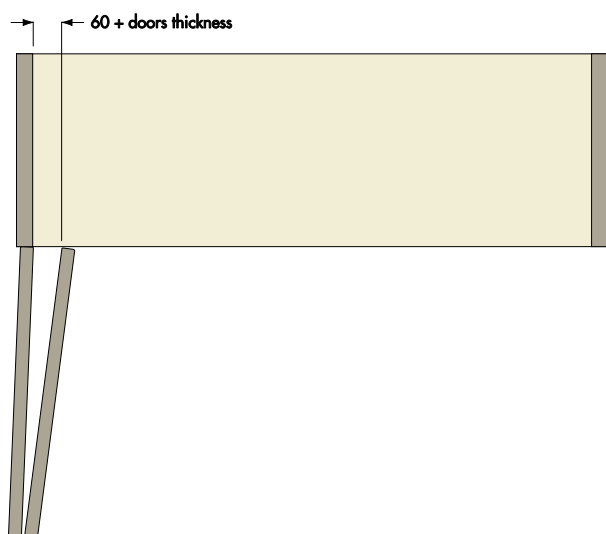


ABBREVIATIONS:

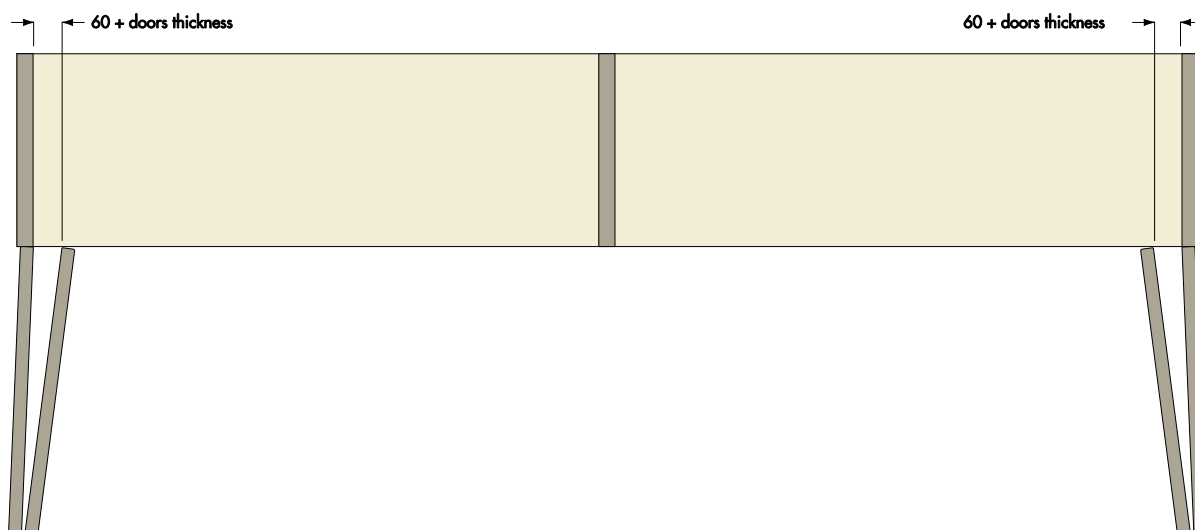
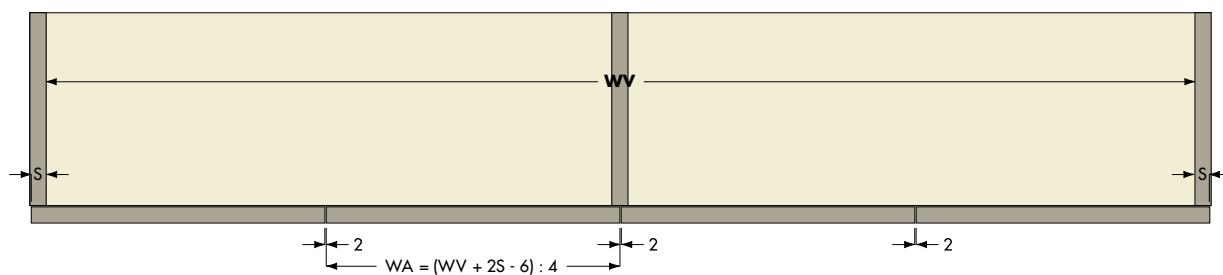
WA = half-door width

WV = cabinet compartment width

S = overlapping

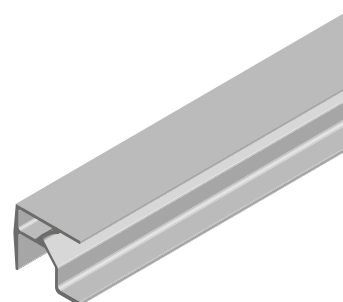
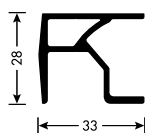


Couple half-doors right side opening: mirror-like

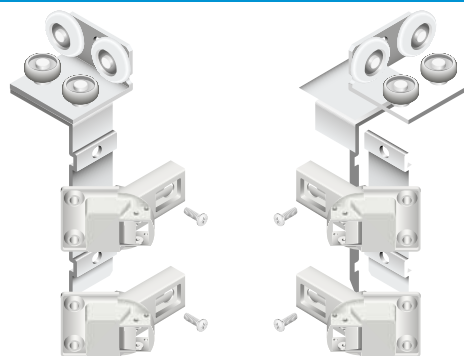


PR2370001A

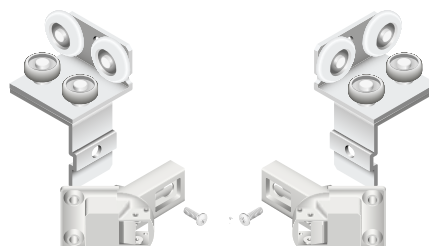
Upper rail.
Finishes: see page 9


PS23KS1001 PS23KS1002

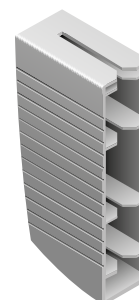
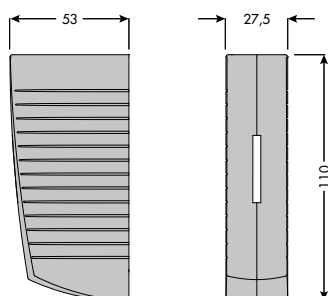
Kit of upper slide.
Finish: Zinc plated


PS23KS1003 PS23KS1004

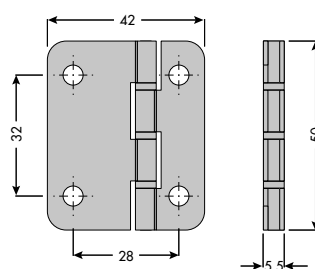
Kit of upper slide.
Finish: Zinc plated


PS23CO8E01

Plastic cover.
Finish: Metalized grey


PL
CL01105042

Asymmetric hinge.
Finish: Zinc plated


FE