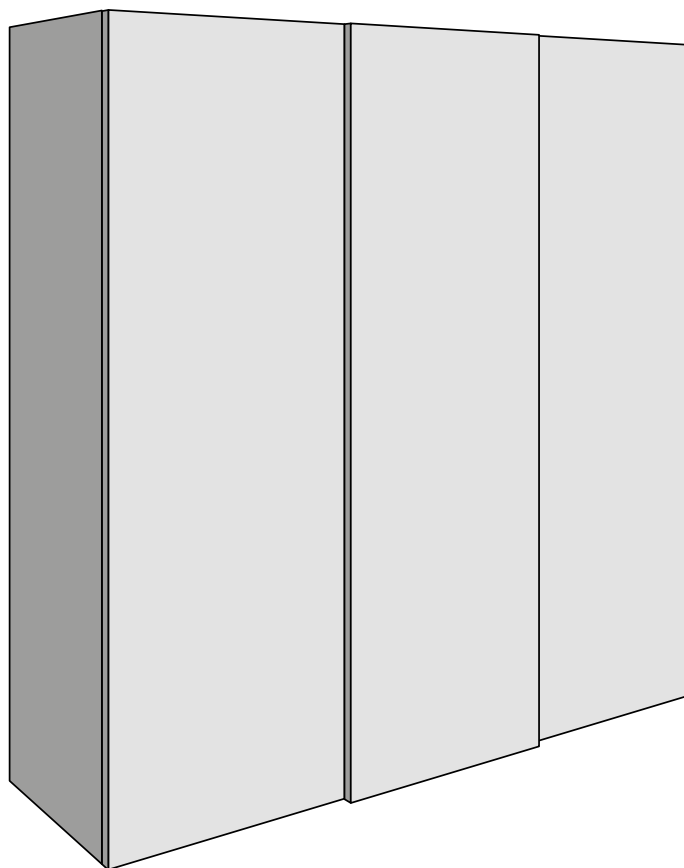
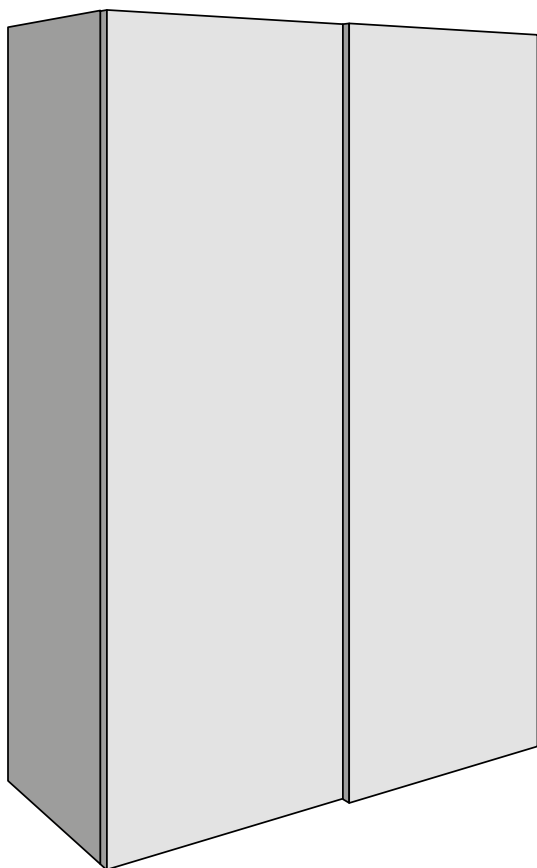


# PS48.1

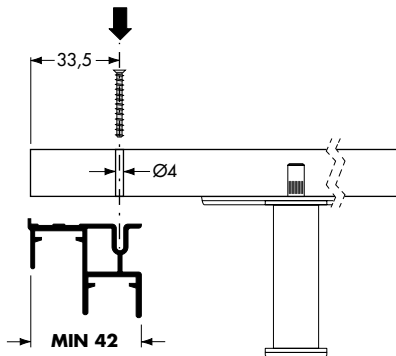
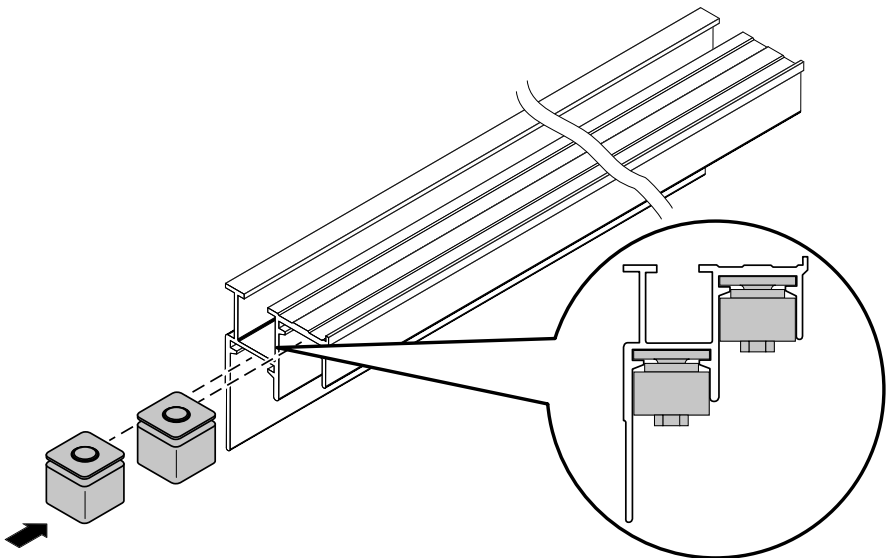
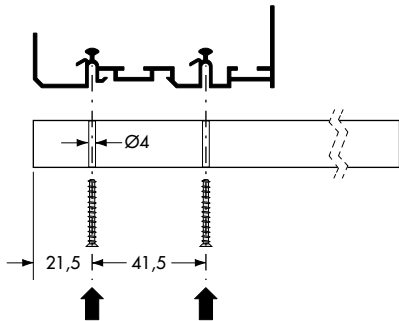
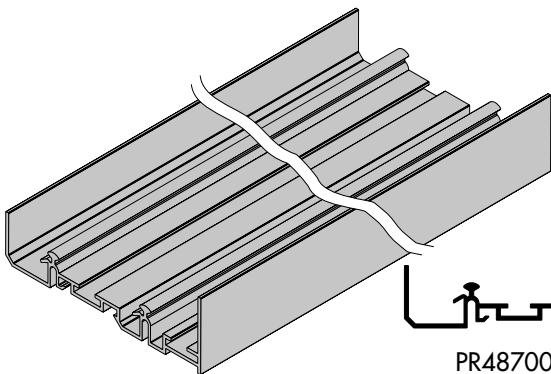
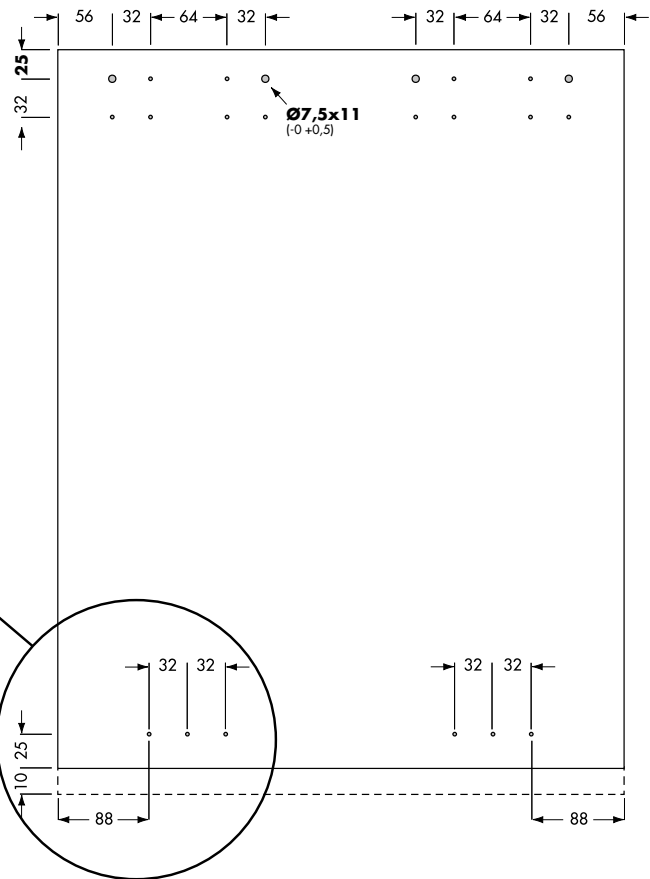
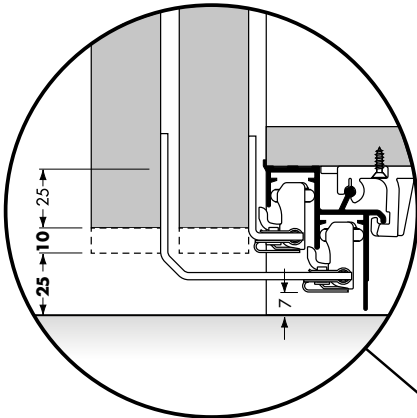
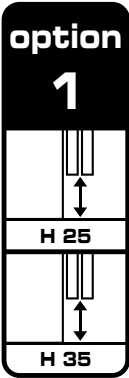
MADE IN ITALY

System for wardrobes with overlapping sliding doors



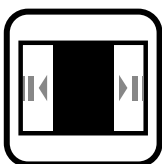
Assembly instructions

Working requests for the doors



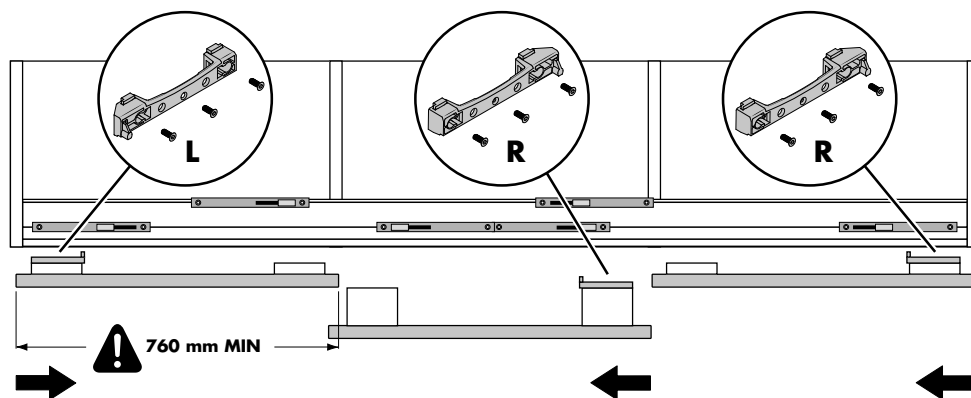


**EASY**  
line

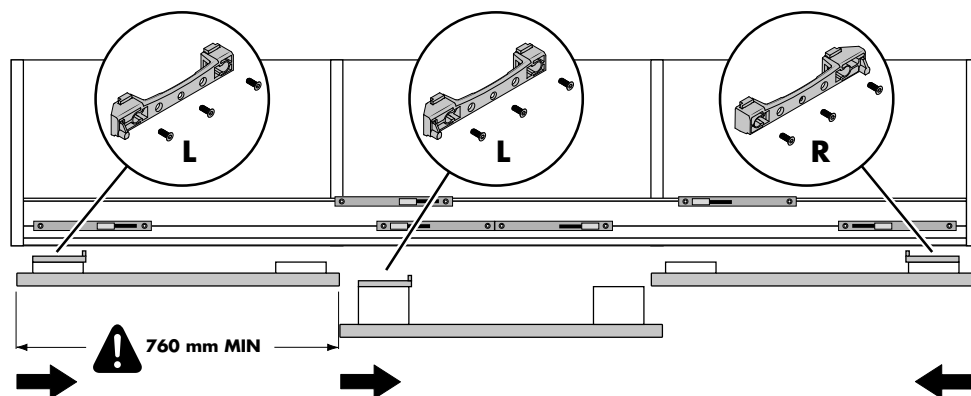


Positioning of soft-closing device and activators.

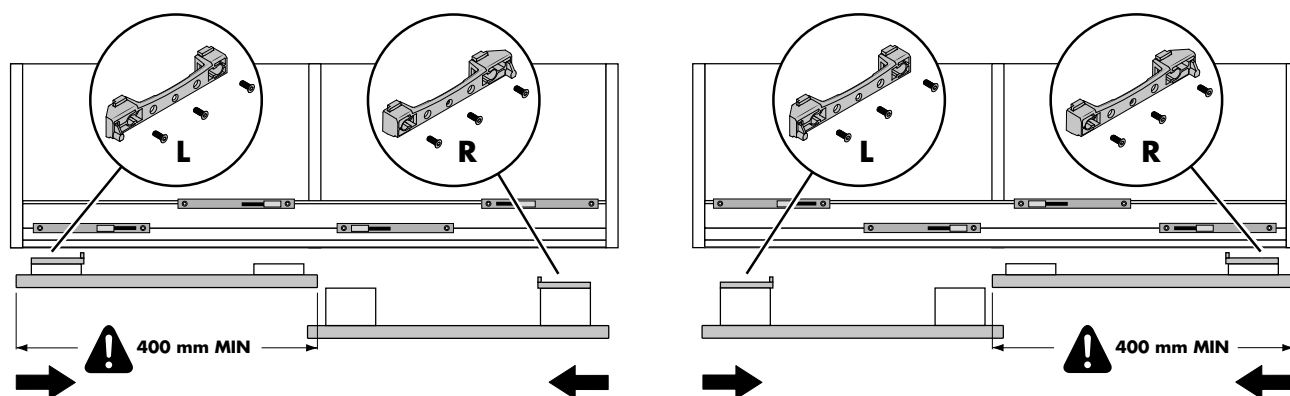
**A**



**B**

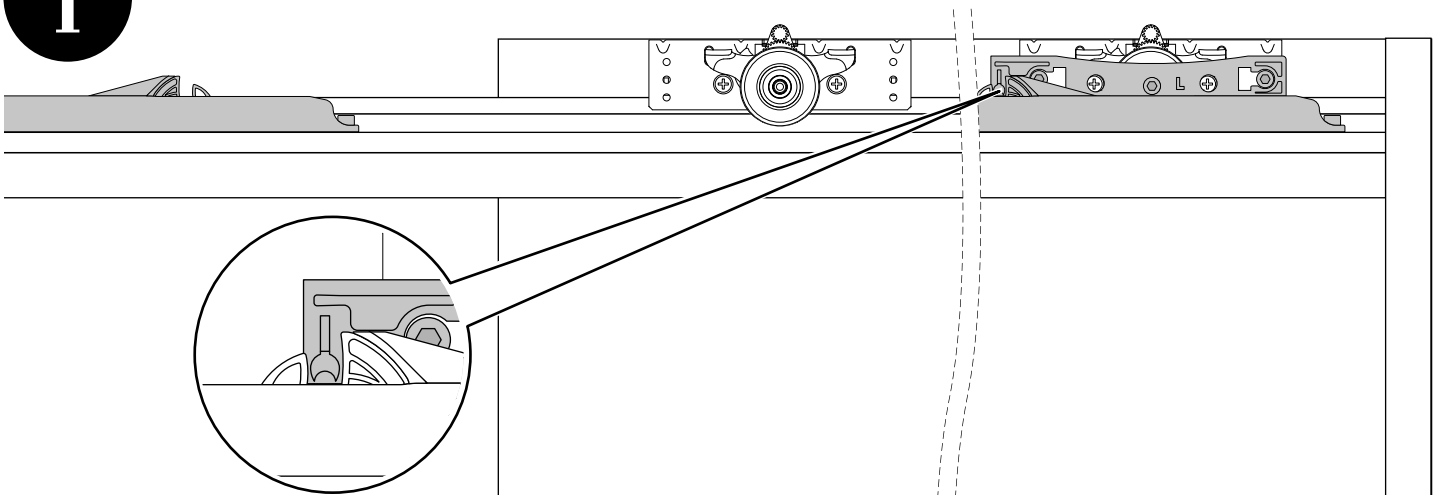
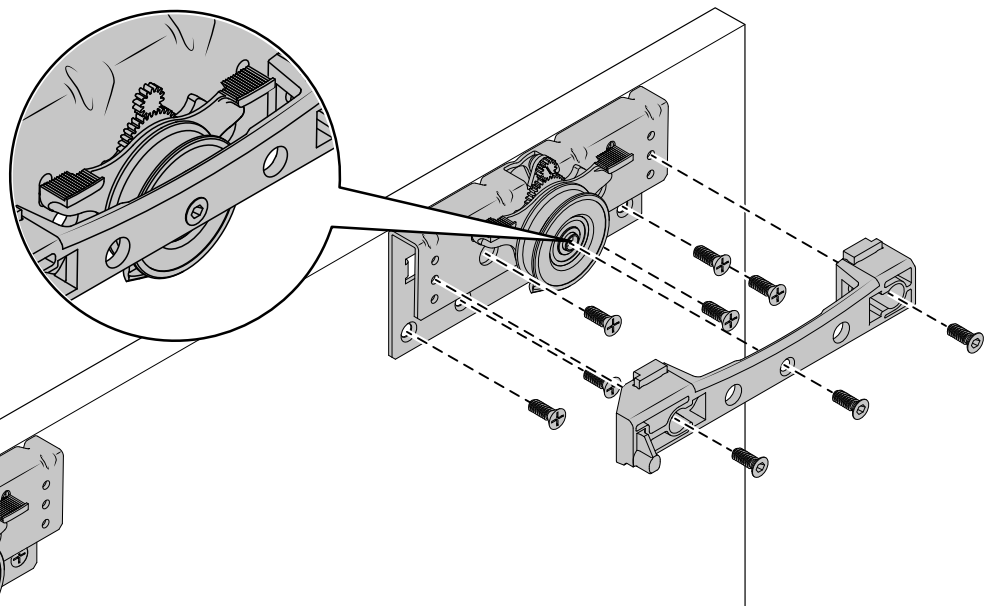
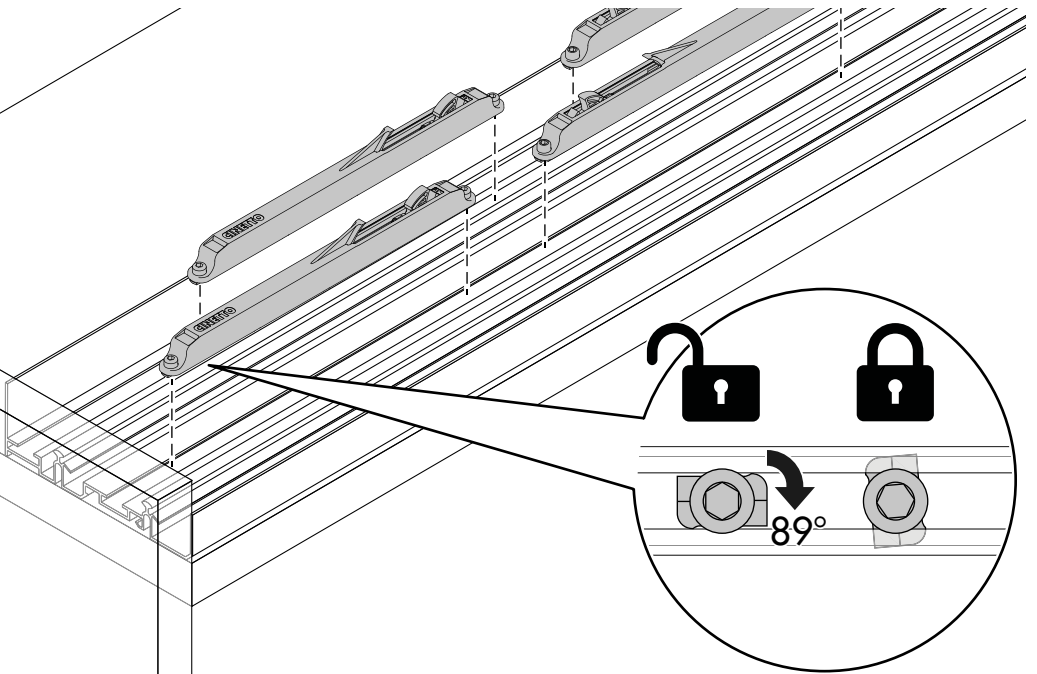


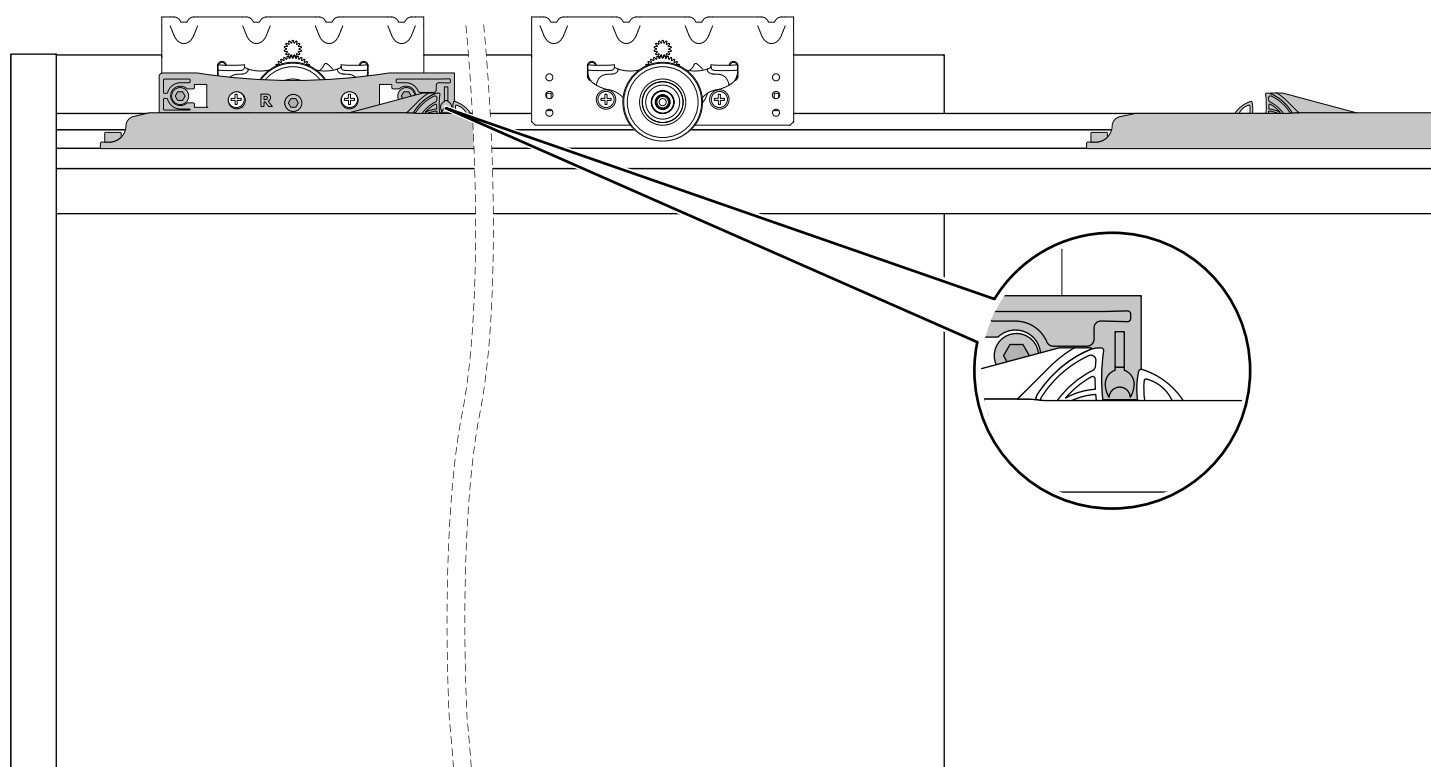
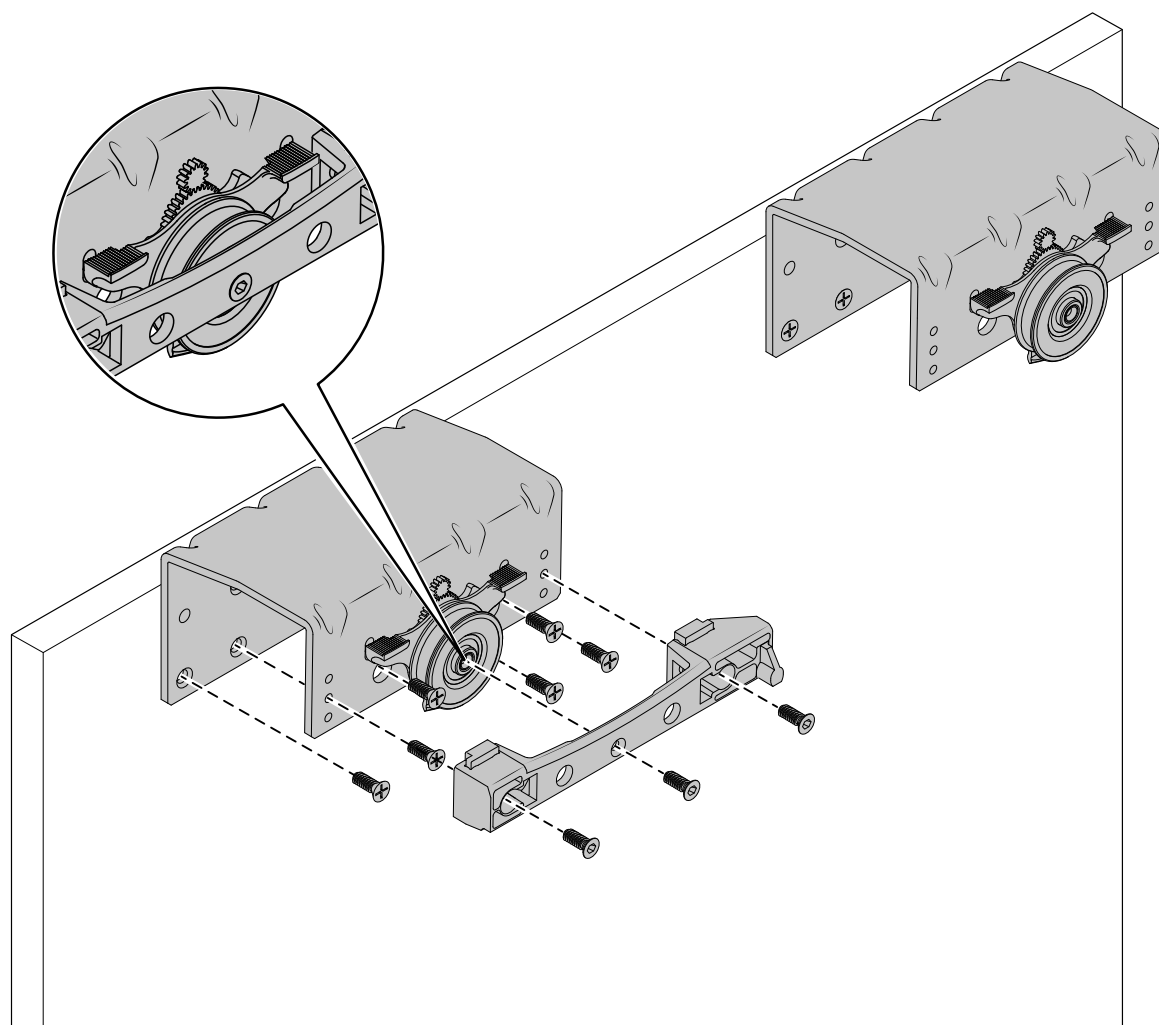
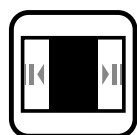
**C**

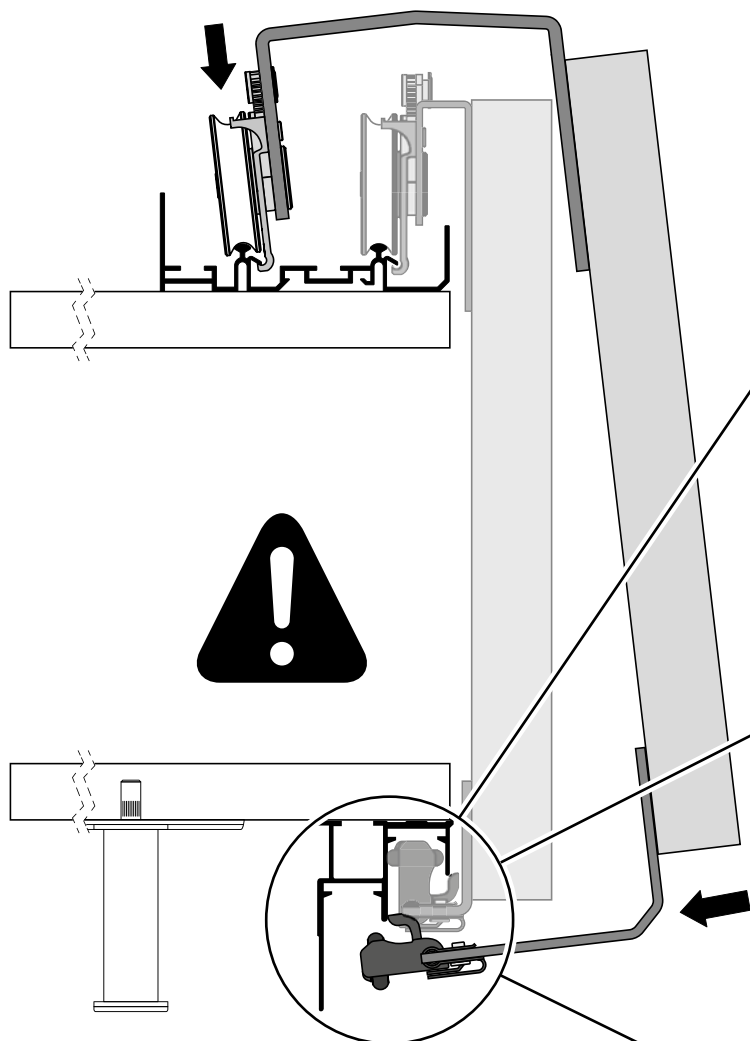




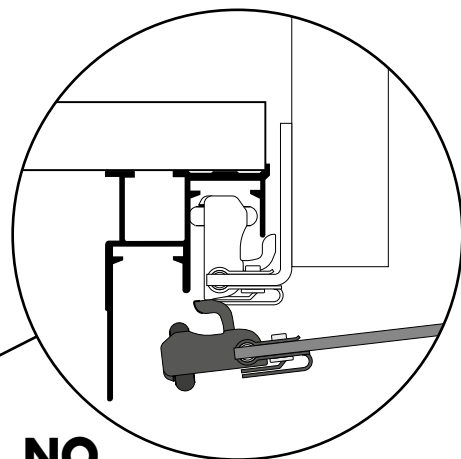
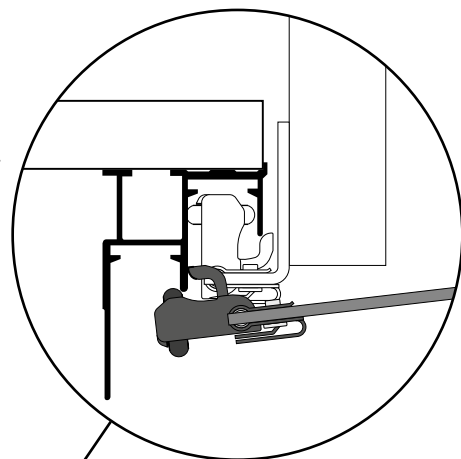
Locking system from  
the top.





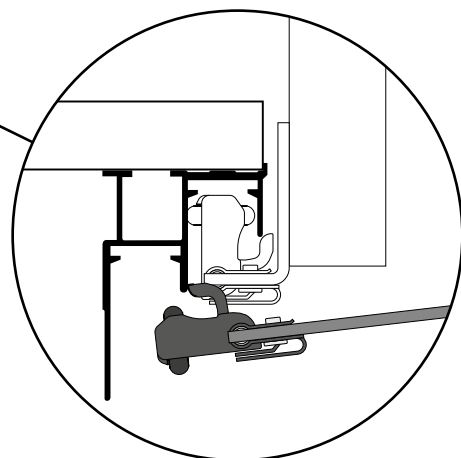


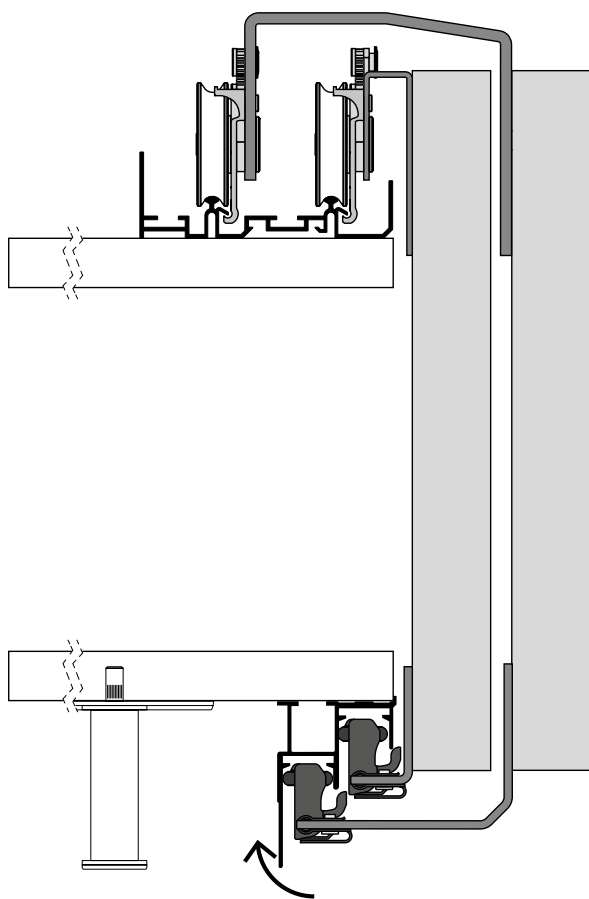
**NO**  
Door adjusted too high.



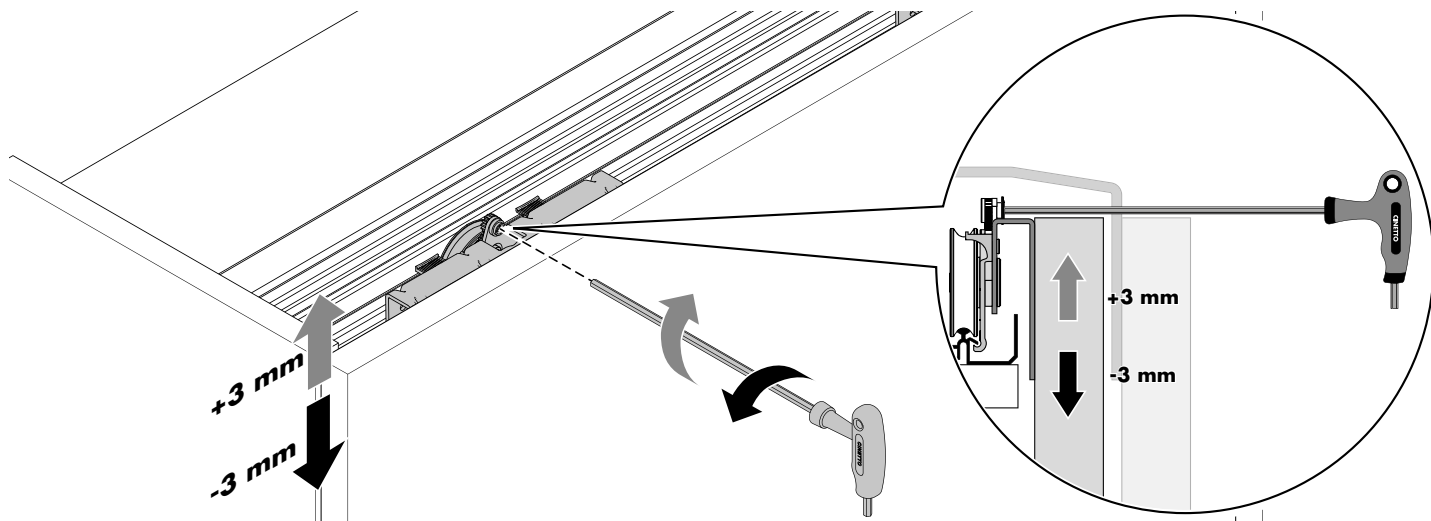
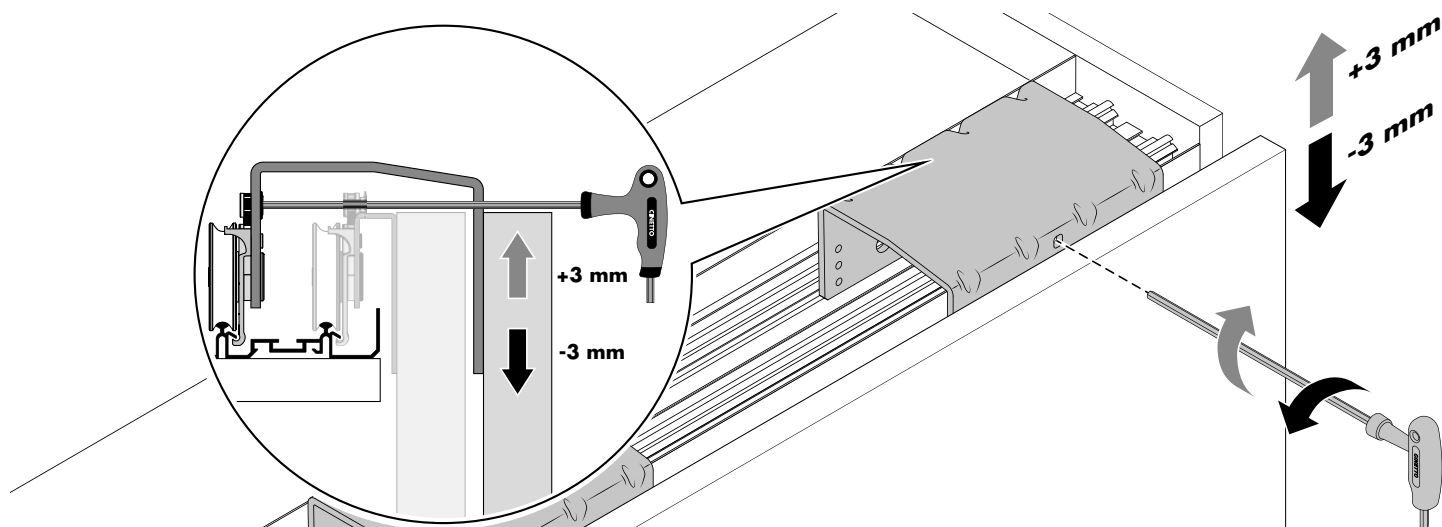
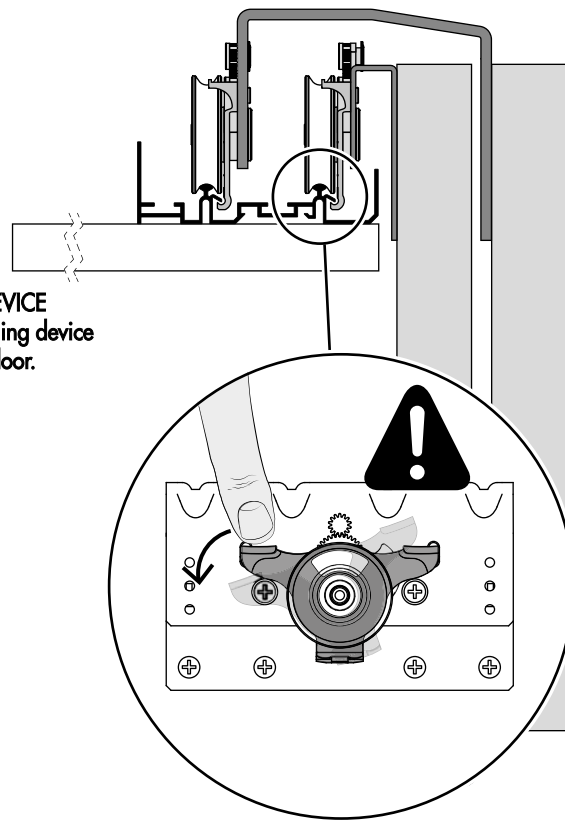
**NO**  
Door adjusted too low.

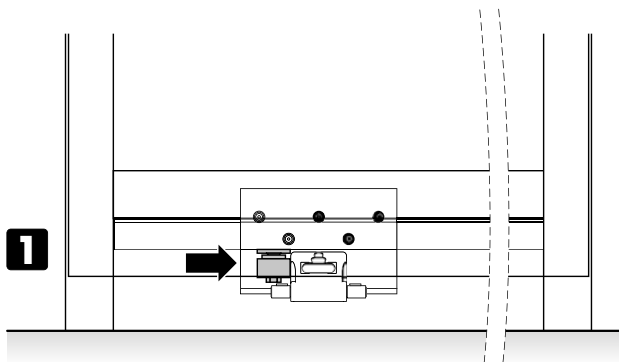
**OK**



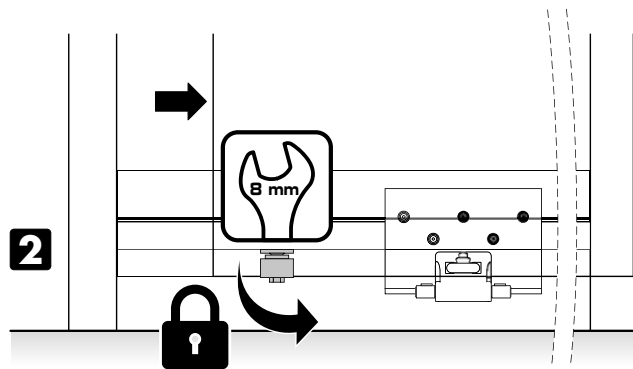


**ANTIDERAILING DEVICE**  
Rotate the antiderailing device  
before remove the door.

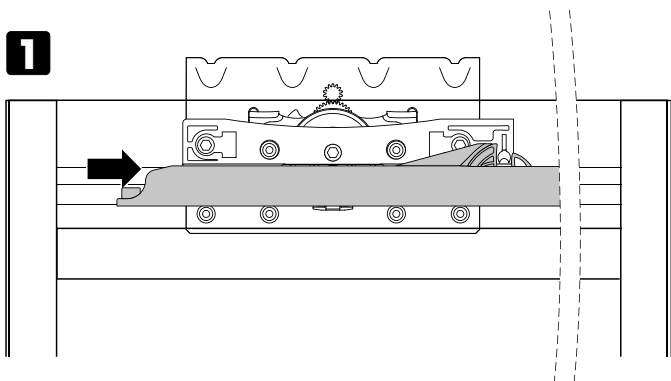




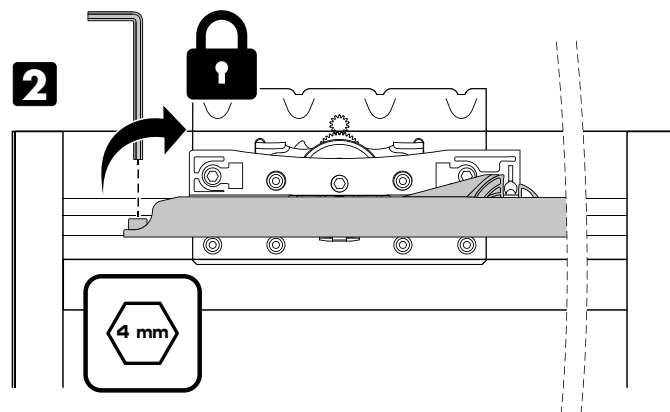
1  
Close the door and positioning the lower lock.



2  
Open the door and fix the lower lock.



1  
Close the door and positioning the soft-closing device.



2  
Fix the soft-closing device. Fixer