



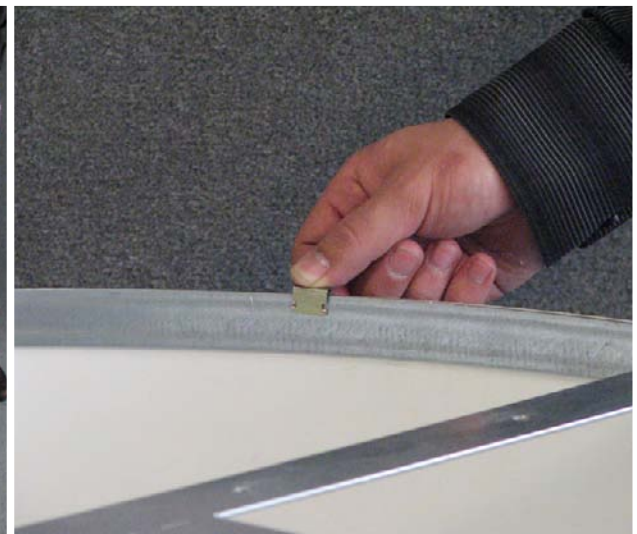
■ Scope of delivery



■ Measurement of the cabinet's dimensions



■ Installation of the top frame



■ Installation of the cam disk



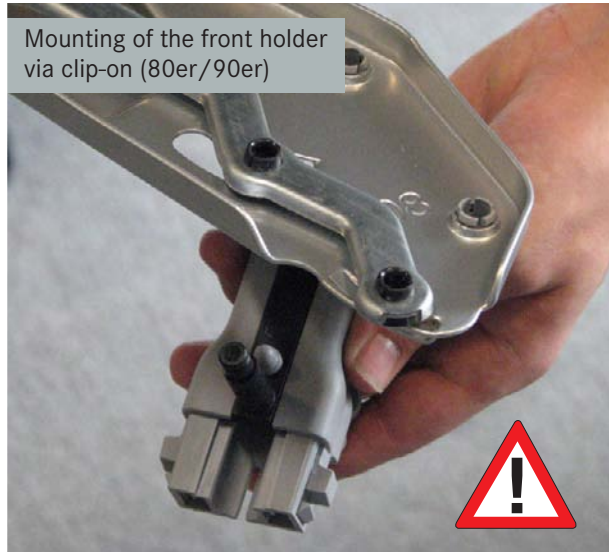


■ Installation of the upper plate



■ Installation of the fitting sided front holder

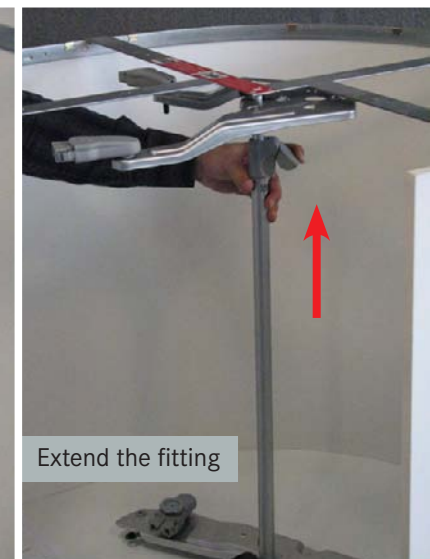
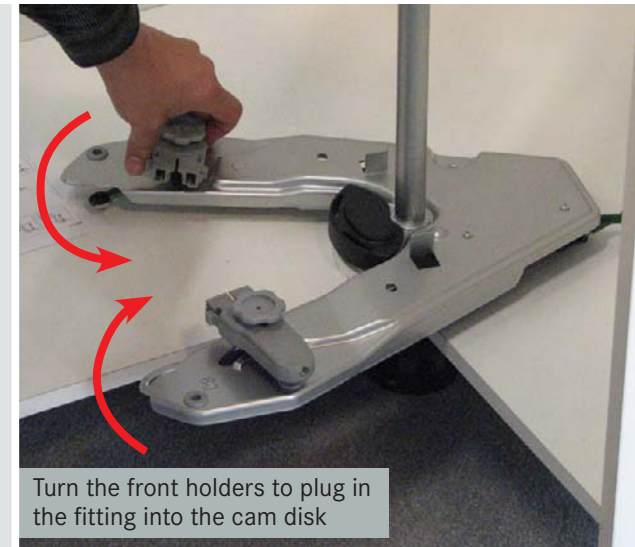
Mounting of the front holder via clip-on (80er/90er)



Plug in the upper front holder

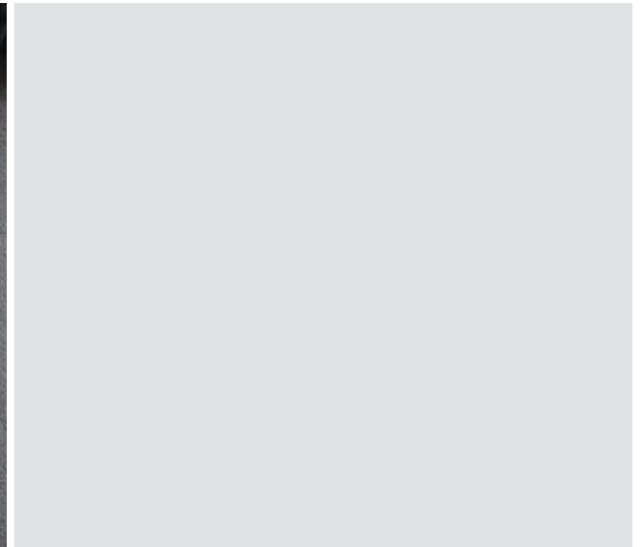


## ■ Assembly of the swivel-fitting

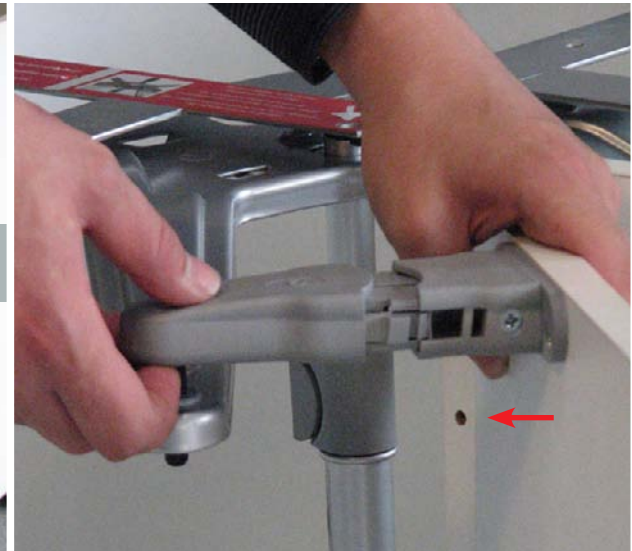
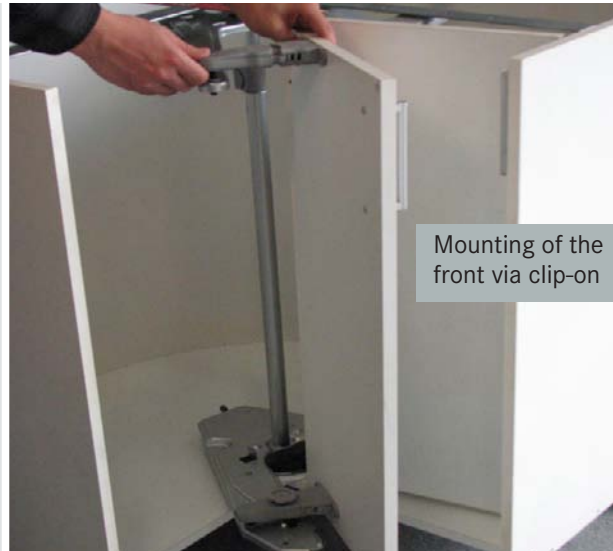




■ Assembly of the front-sided front holders



■ **Assembly of the front and the lower shelf**

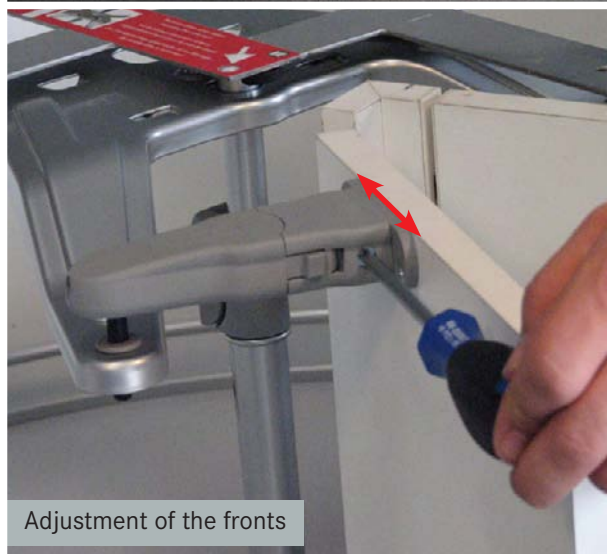


■ Assembly of the shelf's bearing



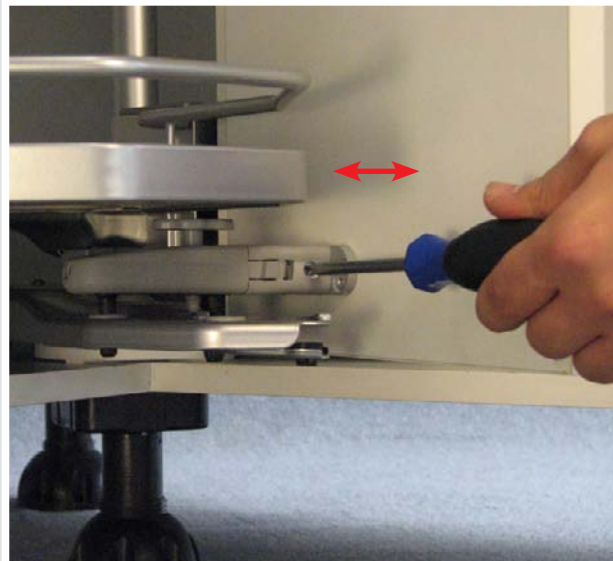


■ Assembly of the upper shelf





■ Adjustment of the fronts



■ Adjustment of the fronts

